

Pega-Rebus

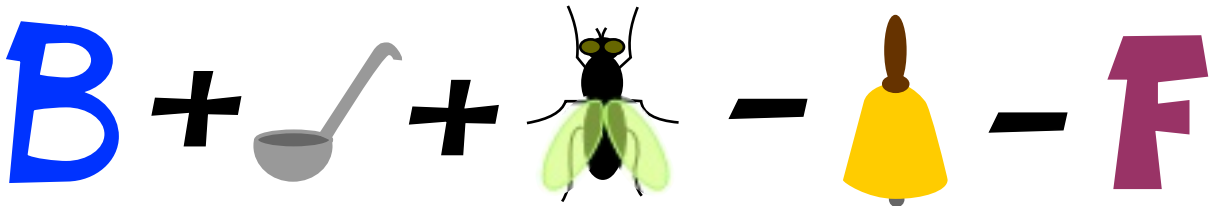
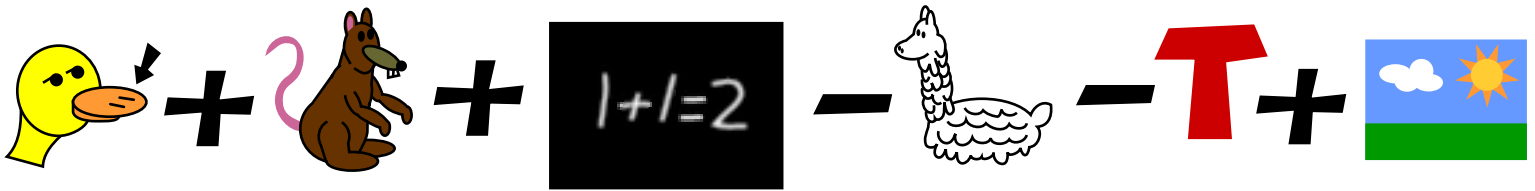
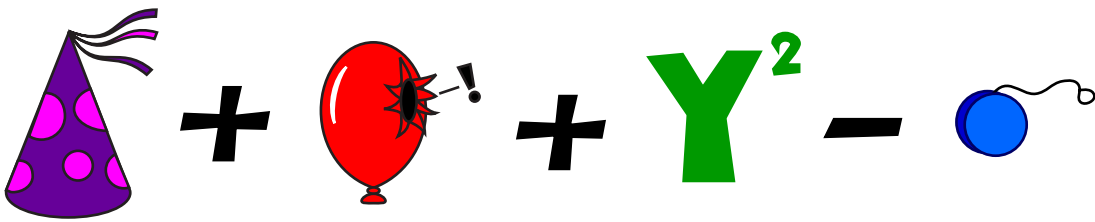
Puzzle of the Month

June 15, 2006

If you have never solved a rebus, you must first figure out what each of the pictures represents. Next, add or subtract the letters from the words. Letters subtracted from the previous sets of words/letters are (1) removed in order, and (2) in closest proximity to the other letters. For example, if you have BACK+CRAB-CAB, after subtracting "cab", you will have BACKR. Another example, if you have BACK+CRAB-BRA, after subtracting "bra", you will have ACKCB.

When you solve this rebus, it should reveal a four-word sentence or phrase.

Be one of the first three people to submit your answer as the subject to info@pegamoosgames.com for a chance to get your name on the Pegamoose Games Wall of Fame.



Pegamoose
G a m e s

Thank you for playing Pegamoose Games. If you enjoyed this puzzle and would like to continue seeing more puzzles like this, please make a contribution on the *Puzzles of the Month* portion of our website: <http://www.pegamoosgames.com/games/puzzles/potm>